

UPDATES ON BIMP-EAGA

30 January 2019
Manila



ASEAN 50
PHILIPPINES 2017

★ ★ ★ ★ ★ ★ ★ ★ ★ ★
PARTNERING FOR CHANGE. ENGAGING THE WORLD

**12TH BRUNEI DARUSSALAM-INDONESIA-MALAYSIA-PHILIPPINES
EAST ASEAN GROWTH AREA (BIMP-EAGA) SUMMIT**

APRIL 29, 2017 • MANILA, PHILIPPINES





Brunei Darussalam-Indonesia-Malaysia-Philippines
East ASEAN Growth Area
(BIMP-EAGA)

Implementation Blueprint

2012-2016



Brunei Darussalam-Indonesia-Malaysia-Philippines
East ASEAN Growth Area
(BIMP-EAGA)

BIMP-EAGA VISION 2025

ASEAN RORO

Davao-General Santos-Bitung

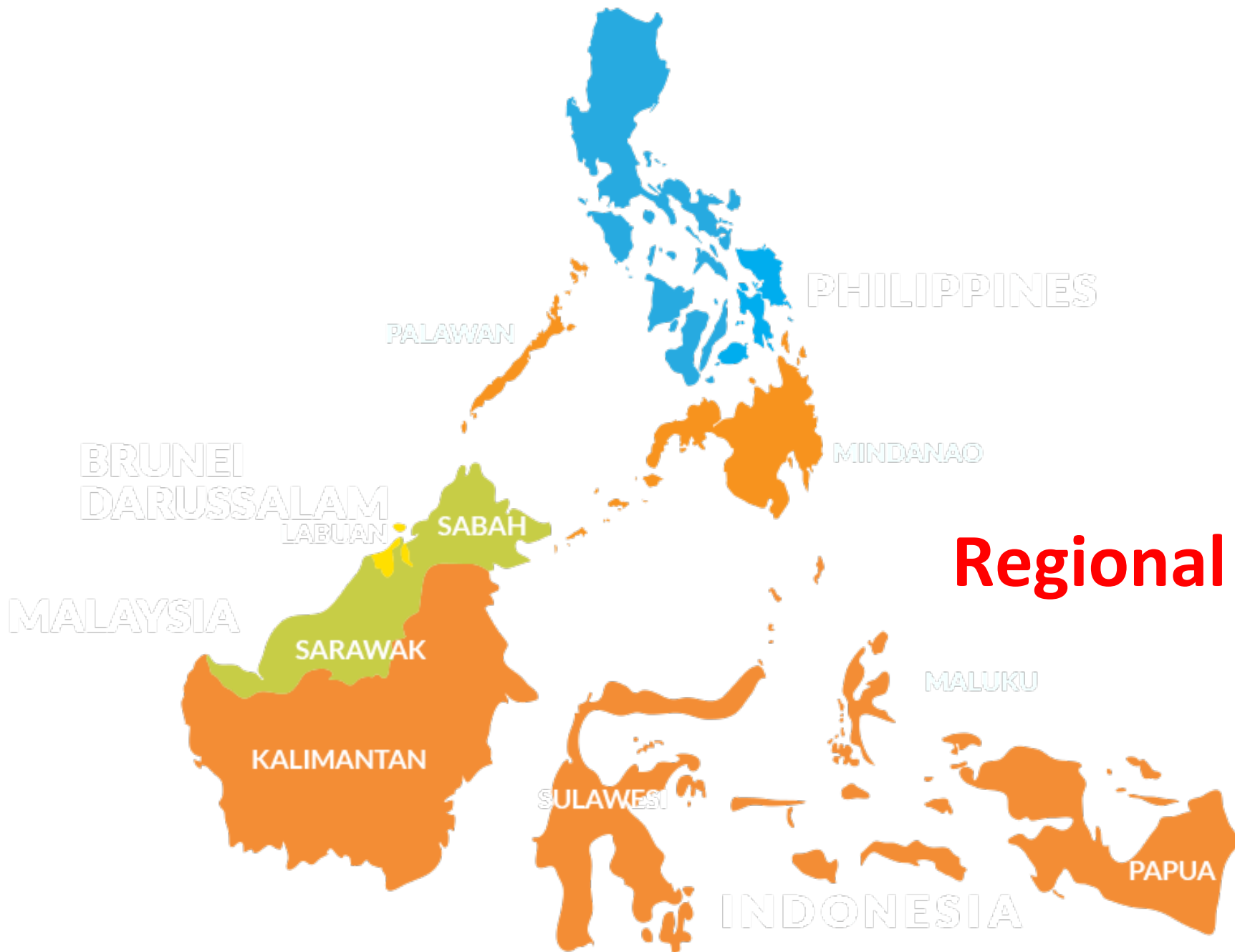


CONNECTIVITY

Priority Infrastructure Projects

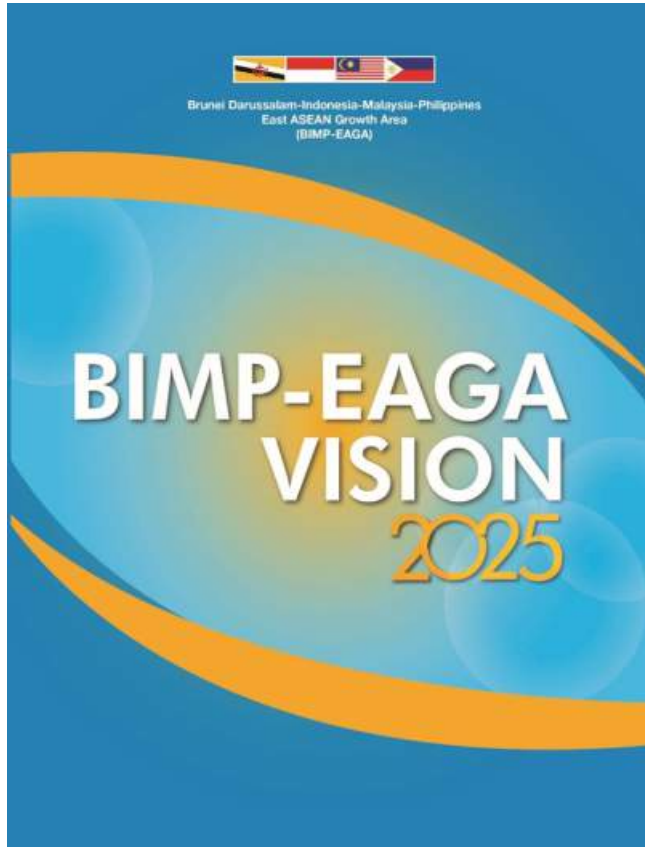


US\$ 21 B

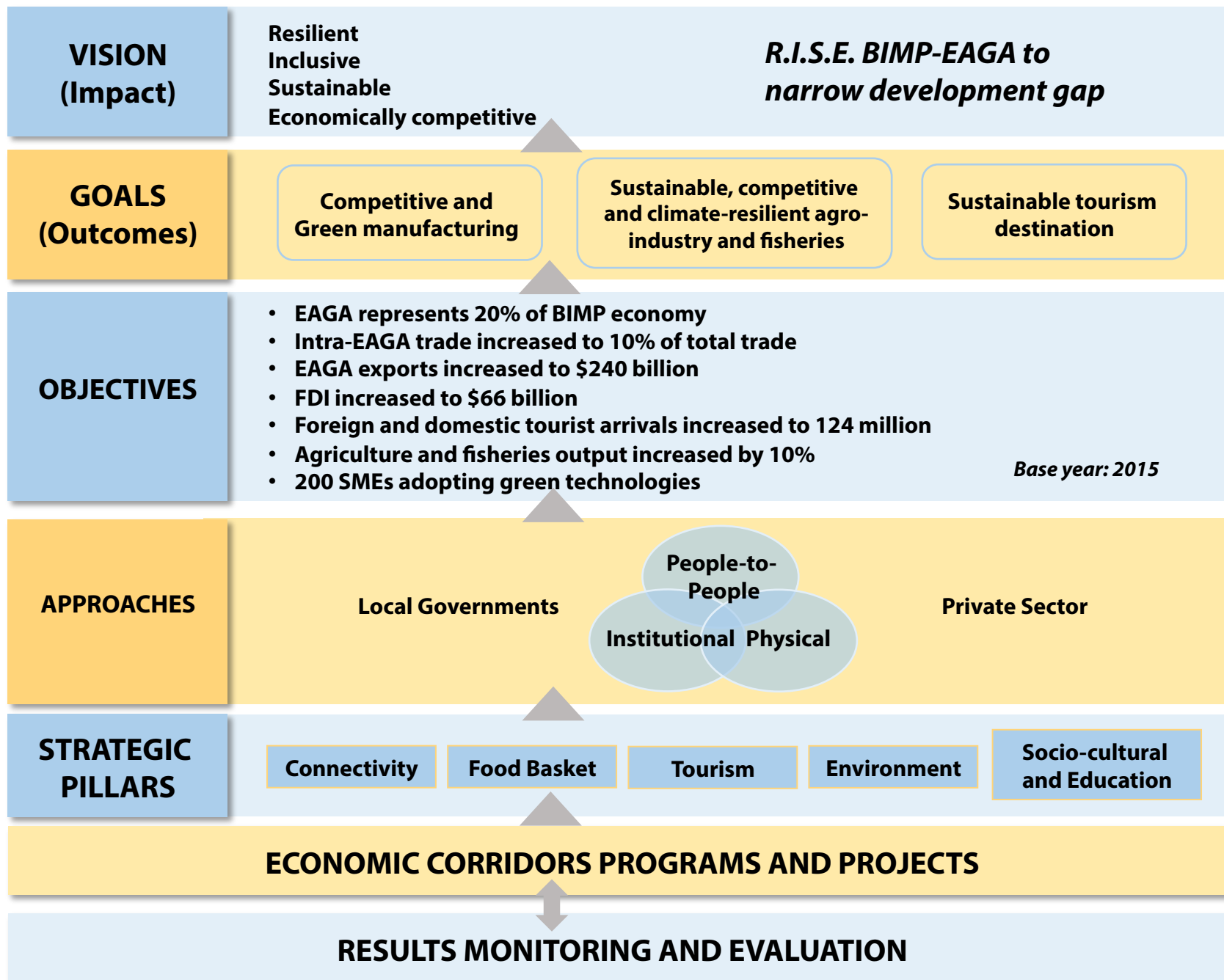


Regional Security

Presentation Outline



- 1 • **Economic Performance**
- 2 • **Achievements and Milestones in Strategic Pillars**
- 3 • **Institutional Mechanisms**
- 4 • **Cooperation with Partners**
- 5 • **Way Forward**





BIMP-EAGA Performance

IN FIGURES



GDP

annual average of **5.7%**



GDP

at current prices

US\$287.3 Billion

Trade in Goods



**US\$102.7
Billion**

Total Exports

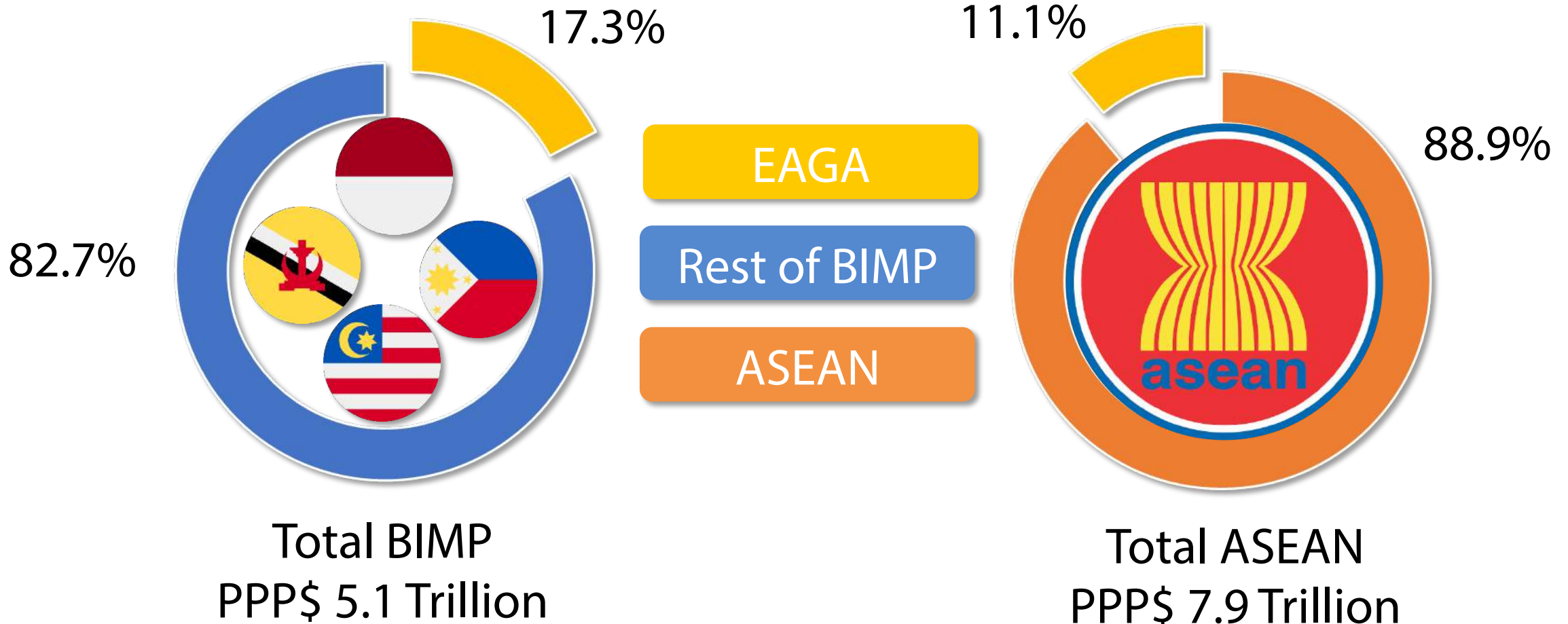


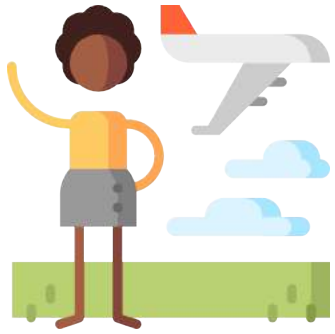
**US\$79
Billion**

Share of EAGA GDP (at current PPP\$)

BIMP

ASEAN





Tourist Arrivals

6.3% growth rate

88.2M total tourists

5.6M foreign visitors



Realised and Approved Investments

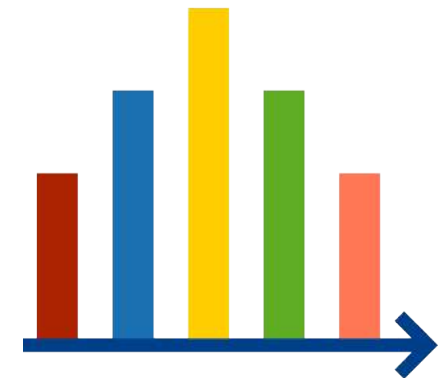
US\$ 13.92B FDI

US\$ 6.98B Domestic Investment



Trade Balance

US\$ 54.7B

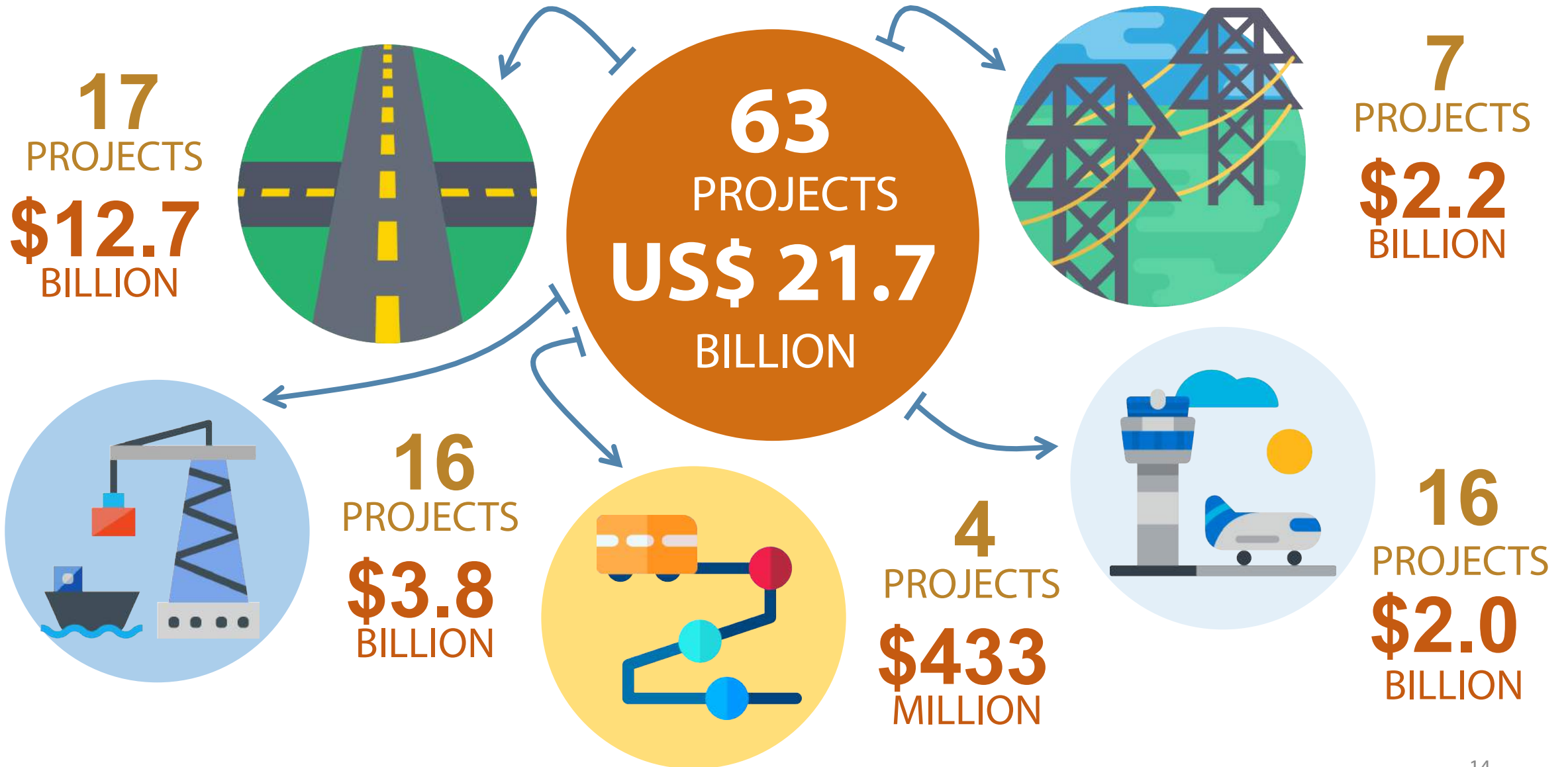




CONNECTIVITY

Pillar

Priority Infrastructure Projects (PIPs)



ROADS

BRIDGES

RAILWAYS

INLAND TRANSPORT SERVICES

- Completed in 2017
- Completed in 2018
- To be completed in December 2018



Temburong Bridge

Pan-Borneo Highway

Pontianak-Entikong Transport Link

Entikong Freight Terminal

Balai Karangan Entikong Road

Aruk, Entok, and Nangabadau

Limbang Bridge

Balikpapan - Samarinda Toll Road

Makassar - ParePare Railway

Kalabakan Road

Tanjungselor to Sabah Border Road

Baland Island Bridge

Palawan Highway Expansion

Western Mindanao Development Corridor Roads

TransMindanao High Speed Railway System

Manado-Bitung Link

ParePare-Mamuju Railway

- ★ National Capital
 - Provincial Capital
 - City/Town
 - ARTERIAL ROAD NETWORK**
 - Completed
 - - - Largely Incomplete
 - Other Main Road
 - ✈ International Airport
 - ⚓ East ASEAN Growth Area (EAGA) Entry Port
 - - - Provincial/State Boundary
 - - - International Boundary
- Boundaries are not necessarily authoritative.



AIRPORTS ADDED

● Completed in 2017



NEW AIR LINKAGES

- Completed in 2017
- Expected in December 2018
- Expected in January 2019

Kota Kinabalu to Bandar Seri Begawan

Bandar Seri Begawan to Kuching

Pontianak to Kuching



SEAPORTS

- Completed in 2017
- Completed in 2018



Buliluyan RORO Port

Puerto Princesa Cruise Port

Brooke's Point Port

Puerto Princesa Fishport

Zamboanga Port

Sasa Wharf

Polloc Port

Sepangar Bay Container Port

Bongao Port

Makar Wharf

Kuching Port

Tawau Port

Lahad Datu POIC Container Port

Manado Port Expansion

Bitung Port Expansion

Makassar New Port

- ★ National Capital
 - Provincial Capital
 - City/Town
 - ARTERIAL ROAD NETWORK**
 - Completed
 - - - Largely Incomplete
 - Other Main Road
 - ✈ International Airport
 - ⚓ East ASEAN Growth Area (EAGA) Entry Port
 - - - Provincial/State Boundary
 - - - International Boundary
- Boundaries are not necessarily authoritative.

POWER INTERCONNECTIONS

FEASIBILITY STUDY

Palawan-Sabah Interconnection

Visayas-Mindanao Interconnection

Sarawak and Brunei Interconnection

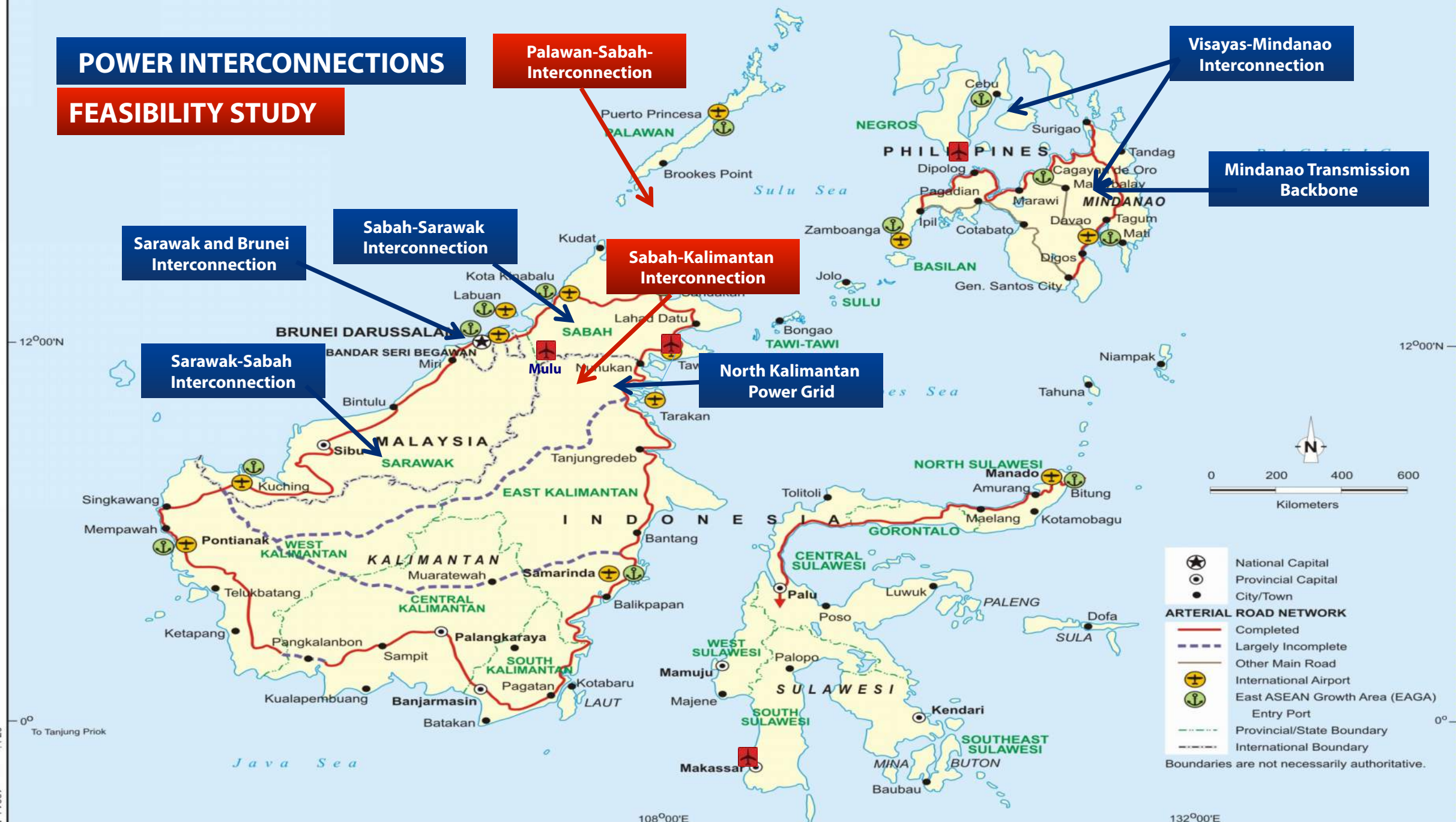
Sabah-Sarawak Interconnection

Sabah-Kalimantan Interconnection

Mindanao Transmission Backbone

Sarawak-Sabah Interconnection

North Kalimantan Power Grid



- ★ National Capital
 - Provincial Capital
 - City/Town
 - ARTERIAL ROAD NETWORK**
 - Completed
 - - - Largely Incomplete
 - Other Main Road
 - ✈ International Airport
 - ⚓ East ASEAN Growth Area (EAGA) Entry Port
 - - - Provincial/State Boundary
 - - - International Boundary
- Boundaries are not necessarily authoritative.

START UP HUBS @ BIMP-EAGA



Puerto Princesa

Kota Kinabalu

Bandar Seri Begawan

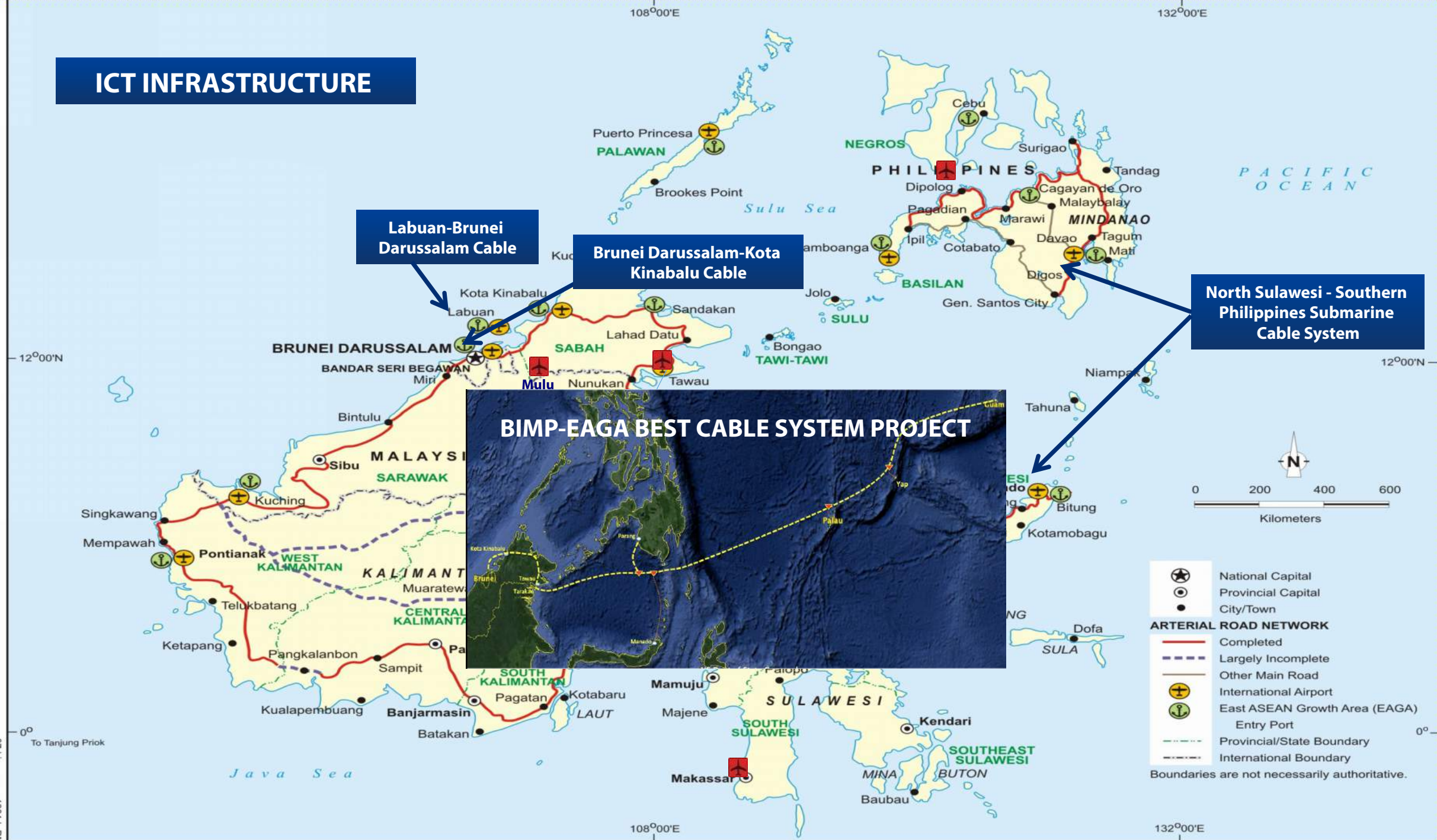
Zamboanga

Davao

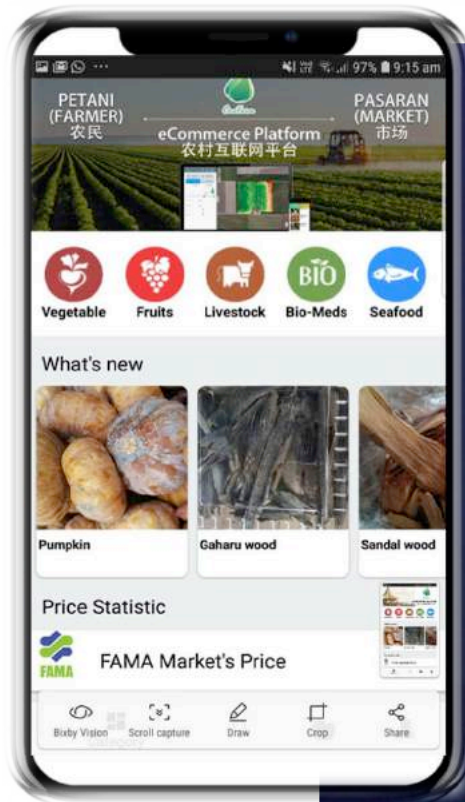
Pontianak

- ★ National Capital
 - Provincial Capital
 - City/Town
 - ARTERIAL ROAD NETWORK**
 - Completed
 - - - Largely Incomplete
 - Other Main Road
 - ✈ International Airport
 - ⚓ East ASEAN Growth Area (EAGA) Entry Port
 - - - Provincial/State Boundary
 - - - International Boundary
- Boundaries are not necessarily authoritative.

ICT INFRASTRUCTURE



07-bimp-eaga-1881-1-RM



BIGDEX

Data Exchange & Analytic Center

Data Exchange & Analytic Center

Integrated Fisheries System
a platform to help fisheries companies manage their data and operation efficiently

Fisheries eCommerce
Online Fisheries Trading Platform for Fisherman & Customer to connect each other

CIQS FACILITIES ECONOMIC ZONES

San Vicente
Economic Zone

Zamboanga
Economic Zone



Bakelalan
Immigration Post

Entikong
Border Crossing

Jasa, Jagoi Babang, Aruk, Nangabadau
Border Crossing Checkpoints





100
COMPANIES



\$24.09
MILLION



5
MOUs



\$2.23
MILLION

4th IMT-GT and BIMP-EAGA Trade Fair, 19-22 July 2018, Hat Yai, Songkhla, Thailand



FOOD BASKET

Pillar



Sustainable Cattle Development in BIMP-EAGA

Tanahmallala Beef Project for poverty reduction in Selayar District, South Sulawesi



Rice Production and Marketing Project

Collaboration between S.L Agritech, Philippines and CV Urip Tani on rice production in Lombok, Indonesia





TOURISM

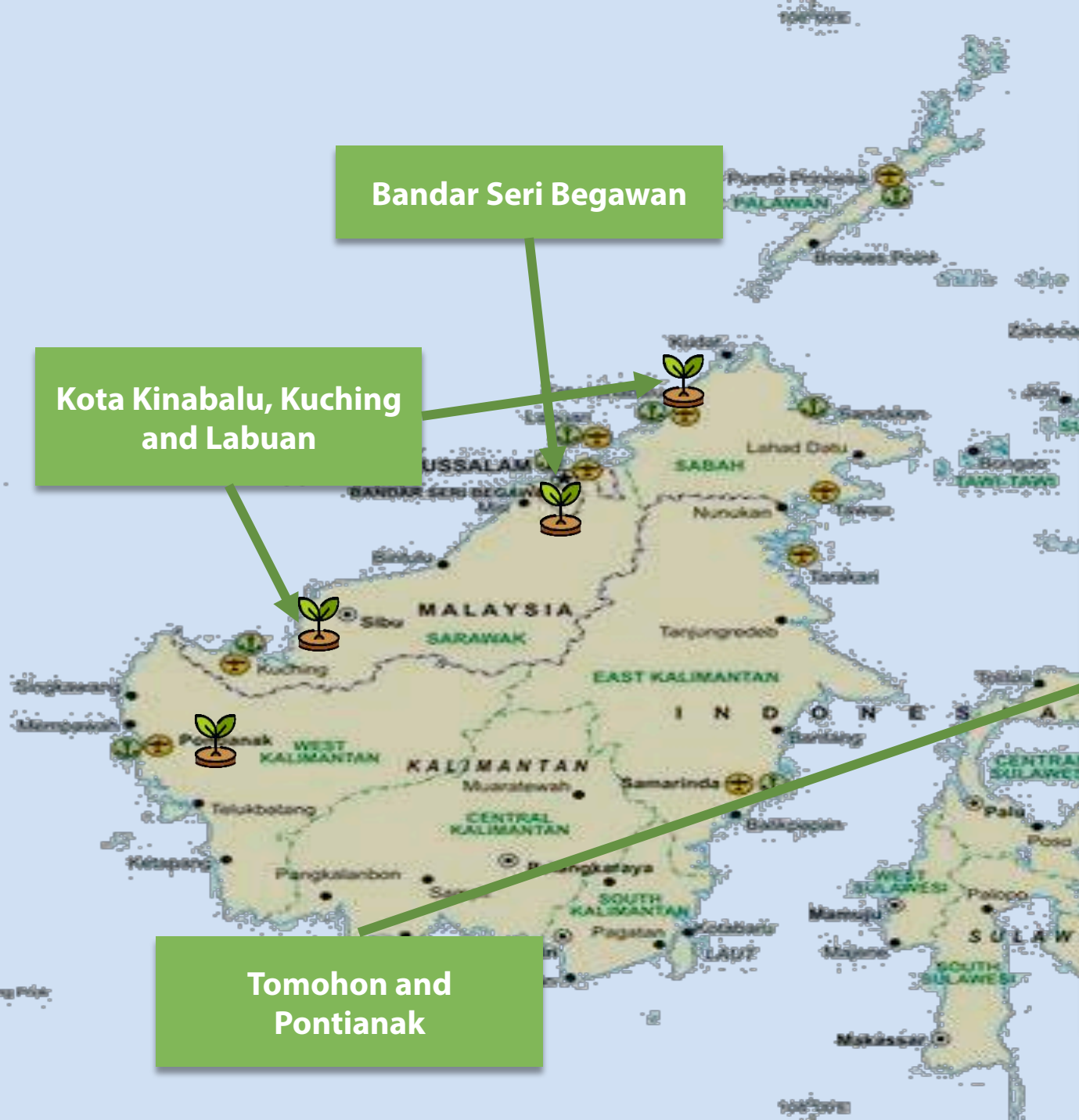
Pillar





ENVIRONMENT

Pillar



Bandar Seri Begawan

Kota Kinabalu, Kuching and Labuan

Tomohon and Pontianak

Brunei Darussalam-Indonesia-Malaysia-Philippines
East ASEAN Growth Area
(BIMP-EAGA)

A collage of four images: a mangrove landscape with a winding river, a group of fishing boats on the water, a close-up of green agricultural plants, and a cluster of white eggs.

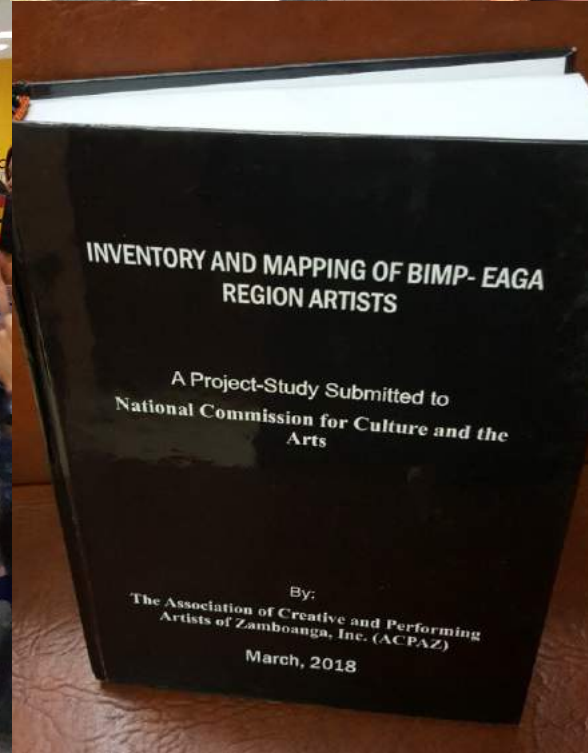
**COMPILATION OF SUSTAINABLE
ECOTOURISM, AGRICULTURE,
AND FISHING CASE STUDIES
IN BIMP-EAGA**

DRAFT REPORT

eral



SOCIO-CULTURAL AND EDUCATION Pillar





**2nd BIMP-EAGA Technical Vocational Education and Training (TVET)
Forum and Higher Education Institutions (HEIs) Summit
31 July – 3 August 2018, Puerto Princesa, Palawan, Philippines**

Convergence Initiatives

Tourism and Transport

- Air connectivity
- Cruise Tourism
- Platform (government, airlines and travel agencies)

Tourism and Socio-cultural

- Joint signature events

Tourism, Environment and Agriculture

- Sustainable best practices in tourism, farming and fishing
- Capacity building
- Knowledge dissemination

ICT and SMED

- Startup hubs@ BIMP-EAGA
- Open/Big Data
- Submarine Cable System

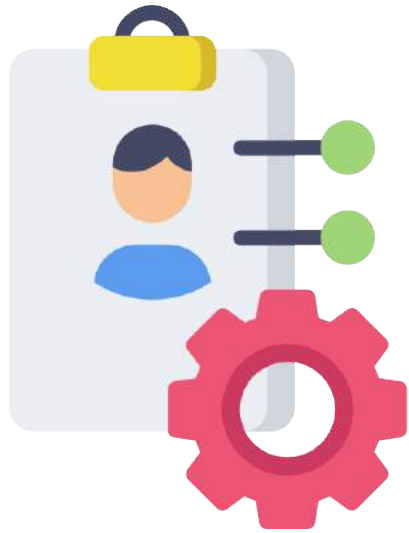


HRD



INSTITUTIONAL MECHANISMS

Institutional Mechanisms



Improve Project Management

(Project Appraisal Committee and Project Implementation Teams)



Strengthen Public Awareness



Establish knowledge platforms and build capacities



Expand alliances and partnerships



Enhance results-based monitoring and evaluation

Private Sector Led Initiatives



**ICT
Projects**



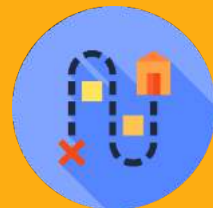
Transport Links
(air, land and sea)



**Strategic business
partnerships**



**Power
interconnections
and Energy**



**Cross-border trade and
investment**
(e.g. Entikong-Tebedu, and trade
and investment missions)



**Agriculture
Projects**



PARTNERS

Cooperation

China

Enhancing the BIMP-EAGA and China Cooperation

9

PRIORITY AREAS

Connectivity

Agriculture,
Fishery
Processing and
Food Industry

Tourism and
Socio-cultural
Exchanges

Trade and
Investment

Digital
Economy

Poverty
Alleviation and
Inclusive
Development

Human Resource
Development

Environment

Power and
Energy

Plan of Action

Northern Territory of Australia



Cruise Tourism

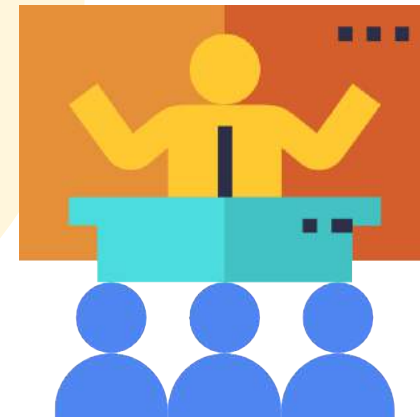


Sharing of best practices on sustainable eco-tourism in UNESCO world heritage sites

Joint Initiatives



Research collaboration on tropical health, oil and gas, and maritime science



Information sharing and technical discussions on the ASEAN qualifications framework

Support to BEV 2025 implementation

Strategic Pillars and Sector Strategies

Connectivity

Economic Corridor
Development

Tourism

Environment

Cross-cutting Themes

Enhancing Project
Management Systems

Building Capacities of
Government Officials

Deepening Links with
ASEAN and subregion

Support to Reconstruction and Rehabilitation of Sulawesi and Marawi



ASEAN Secretariat



Support ASEAN 2025: Forging Ahead Together



Test-bed/pilot ASEAN agreements



Strengthen linkages and complementarities with sectoral plans



WAY FORWARD

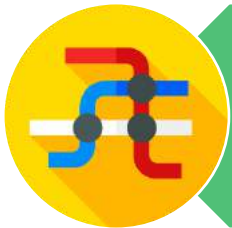
Connectivity Pillar



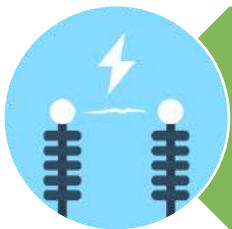
Expedite implementation of Priority Infrastructure Projects



Fast-track transport and trade facilitation measures



Strengthen area-based cooperation in select points, e.g. Buliluyan-Kudat and North-Kalimantan and Sabah



Strengthen implementation of renewable energy

Food Basket, Tourism, Environment and SCE Pillars



Integrate subregional value-chain approach in 5 priority commodities at the project level



Support development of joint tourism packages



Promote dissemination and adoption of sustainable ecotourism, agriculture and fisheries best practices

Scale up Green Cities Action Plans development



Support to BIMP-EAGA signature events and establishment of TVET and HEI networks

Institutional Cooperation and Mechanisms



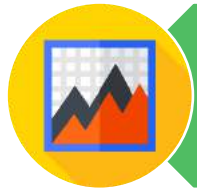
Mainstream provincial, state and local governments participation



Broaden BEBC membership base (industry players and sector stakeholders)



Deepen cooperation with development partners



Implement results-based monitoring and evaluation system



Strengthen linkages and complementarities with ASEAN

INSIGHTS

- Connectivity
- Government Support
- Private Sector Engagement



THANK YOU
TERIMA KASIH
MARAMING SALAMAT